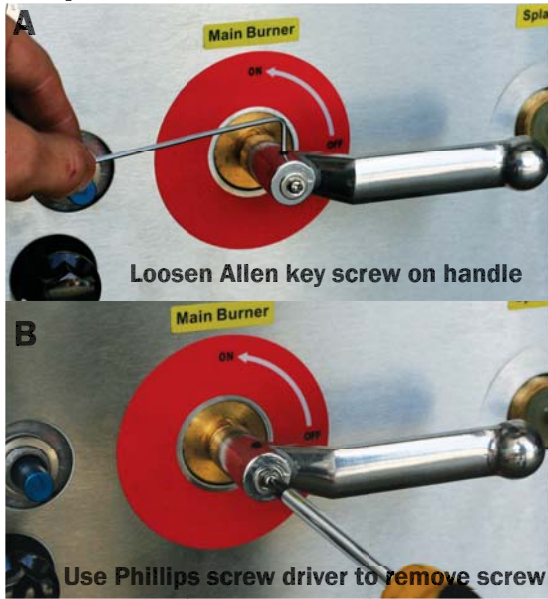


Wok Series - How to remove front panel

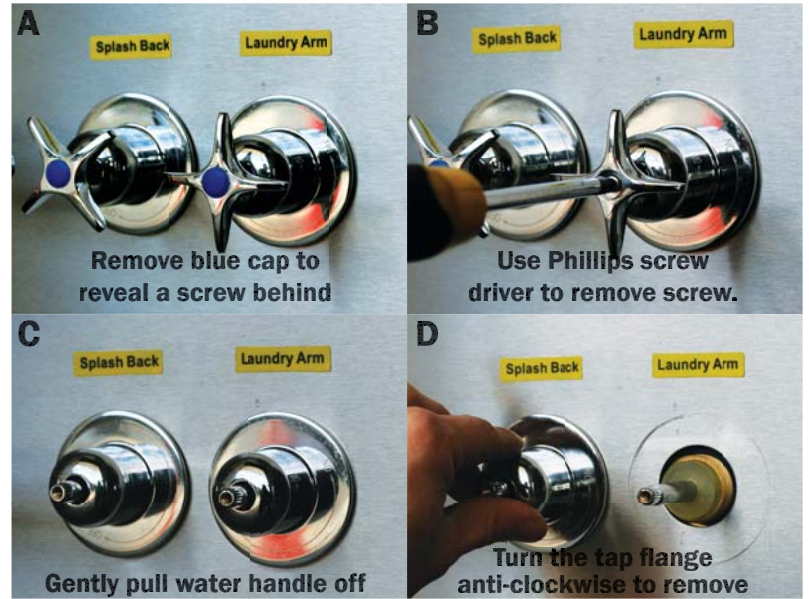
Below sample is shown with a single burner wok.
 All other models follows the same method to remove the front panel
Warning: Avoid using power tools

**Tools: Phillips Screw Driver
 Allen Key**

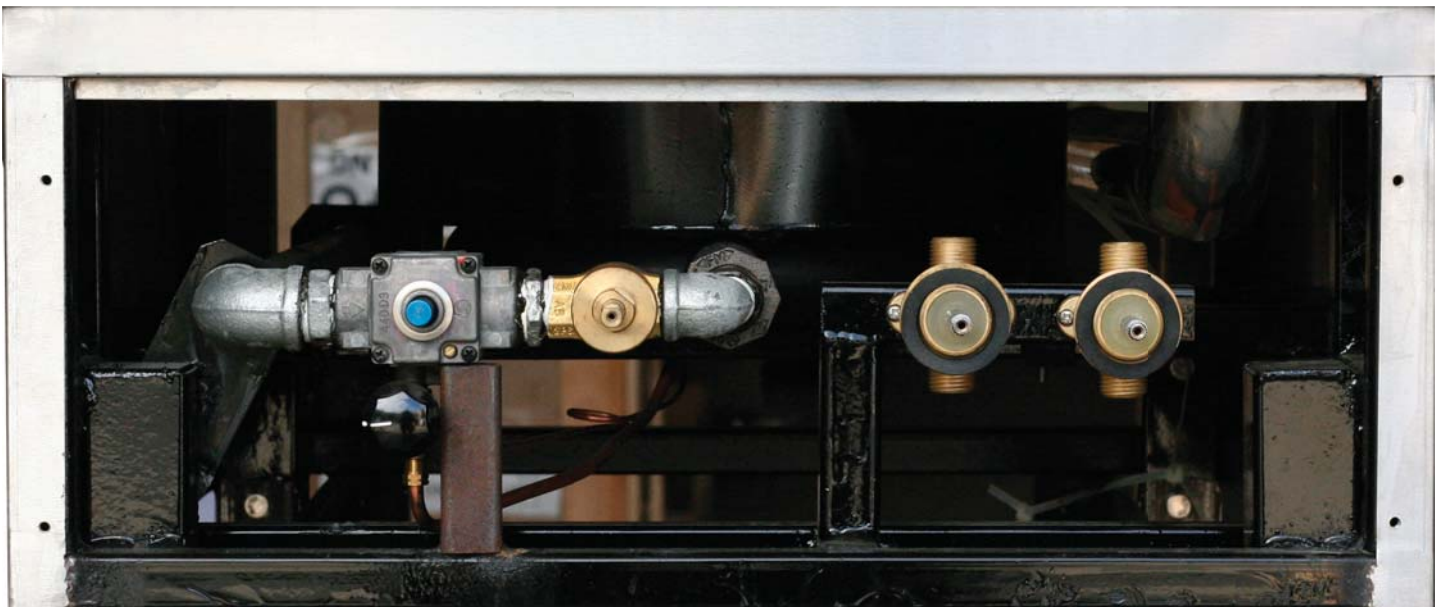
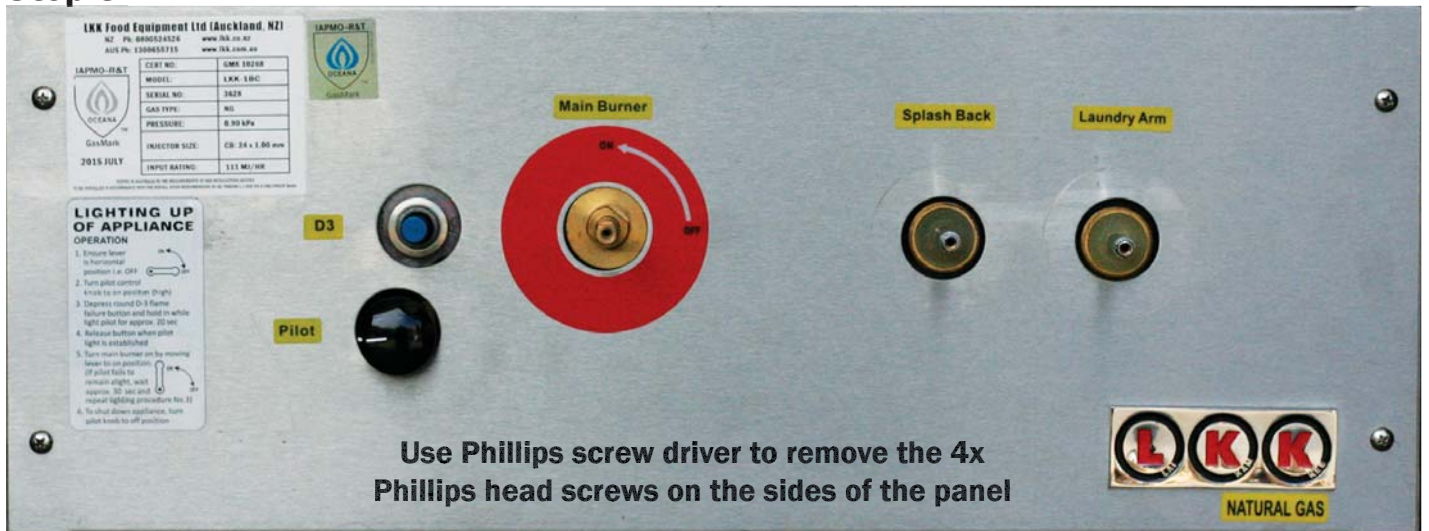
Step 1:



Step 2:



Step 3:



• Specifications and design are subject to change without notice • Pictures are for illustrative purposes only • 2015 July



P: 0800 524 526 F: (+64) 09 836 9168
 18 Paramount Drive, Henderson, Auckland
 www.lkk.co.nz sales@lkk.co.nz

P: 1300 655 715 F: (+61) 02 8587 0033
 47 George St, Clyde Sydney, NSW 2142, Sydney
 www.lkk.com.au sales@lkk.co.nz